

ENA MONTHLY NEWSLETTER

APRIL 2023 ISSUE



EMPOWERING ALL WOMEN TO REACH THEIR FULL POTENTIAL

IN THIS ISSUE

Word from the Group CEO

Empowering Girls and Women to reach their Full Potential

- GCEO Message ----- Pg 1
- Programme Highlights ----- Pg 2
- Institutional Outlook ----- Pg 8
- ENA's Presence in Nakuru City ----- Pg10



Dr. Jennifer N. Riria

PhD, EBS, MBS, HRH/
Goodwill Ambassador,
ICON/HP, Chairperson
AWLN Kenyan Chapter,
Group CEO ENA &
Patron DTF

Empowering women to reach their full potential is essential for achieving the 2060 Agenda for Sustainable Development.

Women are vital agents of change in their families, communities, and nations. When women are empowered, they can transform their lives and those of their families and communities.

However, the gender gap still persists in many areas, including access to education, health care, employment, and decision-making.

To achieve gender equality and empower all women and girls, we must work together to eliminate barriers, provide equal opportunities, and ensure that all women have access to the resources and support they need to reach their full potential.

Echo Network Africa's vision is to be an Inclusive society where girls and women enjoy their full rights and participate fully in the life of Society. ENA employs a catalytic approach of working with Local Implementing Partners (LIPs) to accelerate results with specific attention paid to gender programming, inclusivity, participatory

approaches, and monitoring. As we work towards empowering all women to reach their full potential, we must also recognize that it is not a job for one person or group alone.

It requires collective effort and partnership across all sectors, including government, civil society, and the private sector.

Let us all commit to working towards gender equality and empowering all women to reach their full potential. Together, we can create a world where every girl and woman has the opportunity to thrive and succeed.

“To achieve gender equality and empower all women and girls, we must work together to eliminate barriers, provide equal opportunities, and ensure that all women have access to the resources and support they need to reach their full potential.”

(Programme Highlights)

From Stay-at-Home mom to Helmswoman: Anne's Inspiring Journey

Communities Resilience and Livelihoods

Litare Beach is the home of women fish farmers located on Rusinga Island benefitting from Echo Network Africa's (ENA) Aquaculture initiative since 2019.

The Litare women's group, comprising 23 members and led by a chairperson, secretary, treasurer, and disciplinary master, was formed in 2019 and trained on aquaculture cage farming.

The group is officially registered with the Department of Social Services and has received

training in group formation, dynamics, and management. Ann Anyango, the group's secretary, is a dedicated member with a zeal for propelling the group to greater heights. Prior to joining the group in 2019, Ann was a stay-at-home mom who only engaged in omena business during the season.

However, she was unhappy with her limited income and wanted to do more to provide for her children.



Anne in a motorized fishing boat donated to the women groups by ENA.

ENA's initiative came at the right time, providing Ann with the knowledge and skills to scale up her business and join a group of like-minded women.

Since then, Ann has gained financial literacy and negotiation skills, as well as confidence in finding markets to advance her business and represent the group's interests.

As one of the few women in the group who has learned how to operate the engine boat, Ann now serves as the group's helmswoman, operating the boat daily to and from the cage to feed the fish.

“I’m grateful for the opportunity provided by ENA and the faith they have in women. It means a lot to me, even at the individual level, as I have been able to revamp my business which has in turn helped me fend for my family, pay schools fees and support community initiatives and contribute to merry-go-round. When you support one woman, you support a whole community.”

The group operating the boat has saved the group money that was previously spent on hiring a helmsman and has helped boost their business. During a recent visit by ENA development partners MEDA and the Embassy of Canada in Kenya, Ann's calmness and confidence in the waters earned her praise from the team. Ann's story is a demonstration of the impact of ENA's fish farming initiative on empowering women and driving economic growth in Homa Bay County.



Anne (extreme right) together with her group members pose for a group photo after a successful harvest.



The Zimbabwe delegation pose for a group photo together with like-minded Stakeholders during a learning mission organized to offer insights to strengthen election observation and monitoring.

Amplifying Women's Voices to Enhance Women's Full Participation in Electoral Processes.

Women's Leadership, Political Participation and Governance

Echo Network Africa (ENA) and the African Women Leaders Network (AWLN)-Kenya Chapter continue to pave the way for greater participation of women and marginalized groups in political and socio-economic spheres.

On Tuesday 18th April 2023, ENA and AWLN-Kenya Chapter participated in a Learning Mission at the Kenya National Gender and Equality Commission (NGEC) alongside other like-minded institutions.

This Learning Mission was organized in response to a request by the Zimbabwe Gender Commission to offer insights that can strengthen

Elections Observation and Monitoring to enhance inclusive participation in the electoral process, as well as the involvement and participation of women and Special Interest Groups (SIGs) in preparation for the forthcoming 2023 Elections in Zimbabwe. Mr. Obert Matshalanga, the Vice Chairperson of the Zimbabwe Gender Commission led the mission, and representatives from UN Women Zimbabwe. Other stakeholders present were Catholic Justice and Peace Commission (CJPC), United Disabled Persons - Kenya (UDPK), Kenya Editors Guild, and REINVENT.

ENA and AWLN-Kenya Chapter have been at the forefront of advocating for gender equality and empowering women to take up leadership roles. Through their work, the voices of women have been unified and amplified, ensuring that women leaders speak in one voice on pertinent issues that affect the full and equal participation of women and girls in political and socio-economic spheres.

The Learning Mission at NGEC provided an opportunity for these organizations to share their experiences, insights and expertise on enhancing inclusive participation and ensuring that women and Special Interest Groups are represented in the electoral process.



ENAs Gender Audit and Analysis of Kenya's General Elections 2022 was presented to Mr. Obert (Right) the Vice Chairperson Zimbabwe Gender commission by Mrs. Sarah Muhoya (Left), Head of Women's Leadership, Political Participation and Governance at ENA.

ENA Honors Anti-FGM Champions Fighting Triple Threat Against Girls in Narok

Girls Excel Initiative

Echo Network Africa through the Girls Excel Initiative held an awards ceremony in Oloirouwa sub-location in Narok County to honor anti-FGM champions.

Among the 28 community members and champions who were awarded certificates of appreciation were those doing an exemplary job in the campaign against FGM, teen pregnancies, and child marriage. Seven out of the 28 received an award of school fees for their children.

One of the awardees was the mother of a girl facing community stigma and ridicule for not undergoing FGM. The girl got pregnant and was married off without undergoing the cut, and after delivery, she was said to bring bad luck to her matrimonial family and was returned back to her parents to be cut before going to her husband.

However, her parents stood with her and even re-enrolled her back to school while taking care of the baby. ENA takes pride in fighting the triple threat against girls in Narok. As an incentive the parents received Ksh. 5000 to encourage and support the girls.

The ceremony was graced by H.E Agnes Ntutu, the first lady of Narok County, accompanied by government officials and stakeholders. The speakers emphasized the need to work together to curb the triple threat facing girls in the Maasai community.

The Assistant County Commissioner reported that through the help of ENAs champions, they had managed to improve the enrolment of girls and early reporting of FGM cases. He also acknowledged that the area assistant chief was a community champion trained and supported by ENA, enabling him to perform better in his duties.

Community members were sensitized on how to access various government affirmative action funds for economic empowerment. The Women Enterprise Fund promised to avail loans worth KES 5,000,000 to women groups in Oloirouwa sub-location. However, a concern was raised that the sub-location has a high HIV prevalence due to sharing tools during FGM and polygamy fuelled by FGM, indicating that there is still a lot of work that requires ENA's intervention.



Demonstrations of the support of Anti FGM drive by members of the community who were encouraged by H.E Mrs. Agnes Ntutu, First Lady of Narok County.



Assistant Chief Nkaate Ntaiya is adorned with ENAs branded anti FGM Maasai shuka and awarded a certificate by Narok's first lady H.E Mrs. Agnes Ntutu for his active participation as a community champion against FGM.

Women's Role in Peacebuilding: A case of Gertrude Openda

Peace and Conflict Resolution

Gertrude Openda had always been passionate about making a difference in her community. In the year 2000, she resigned from her teaching role to pursue community work. Little did she know that this decision would set her on a path to becoming a champion for peace in Kenya.

In 2007, during the Post-Election Violence, Gertrude was nominated to sit in one of the District Peace Committees in Nairobi. Her outstanding performance in this role led to her election as the Chairperson to represent all the Peace Committees in Nairobi at PeaceNet Kenya.

She was later elected as a trustee of PeaceNet Kenya, a position she still holds to date. Her duties include organizing periodic peace and conflict resolution meetings for the Nairobi Regional Team and other stakeholders. PeaceNet Kenya was established in 2002 during the Ethnic land clashes in the Rift Valley's Molo, Burnt Forest, and Kuresoi areas to mitigate conflict issues. This organisation was registered in 2005 as a National Umbrella Body of NGOs, CBOs, and Religious organizations, Government institutions, and individuals who are committed to peace-building and peaceful co-existence.

Gertrude's commitment to peace-building led her to partner with Echo Network Africa to work with women in informal settlements to foster peace and conflict resolution. Women peace actors from the informal settlements in Nairobi, Kisumu, and Mombasa were trained on the different aspects of peace and conflict management, aligned with the Kenya National Action Plan 1325. Gertrude not only mobilized the participants but was also a key facilitator.

After the trainings, the women peace actors developed action plans detailing their priorities to enable peaceful co-existence among diverse community groups and enhance peace in their communities. This resulted in increased awareness and advocacy on peace in the informal settlements, with over 50 different awareness sessions undertaken through edutainment, community barazas, in places of worship, in schools, and other public gatherings. Gertrude believes that women, well trained and being trusted by the community and having their ears on the ground, are usually amongst the first people to get alerts on any looming conflict in a community.

As such, they play a key role in preventing conflict and violence, as they easily detect early triggers of violence. This therefore positions them to use creative and non-violent means such as dialogue and mediation to mitigate full-blown conflict.

Women play a critical role in peace-building and conflict resolution, and therefore their inclusion in peace structures in the country is key. This aligns with the United Nations Resolution Council

1325 and KNAP II, which reaffirms women's right to participate in all aspects of peace and security in Kenya as a means of promoting sustainable, transformative, and prosperous peace and development in the country.

Gertrude's work with Echo Network Africa and her commitment to peace-building has contributed immensely to creating a more peaceful and cohesive society in Kenya.

“ Women play a critical role in peace-building and conflict resolution, and therefore their inclusion in peace structures in the country is key. ”



Gertrude Openda facilitating one of ENAs peacebuilding forums.

Institutional Outlook

Strengthening LIPs Reporting and Documentation Practices.

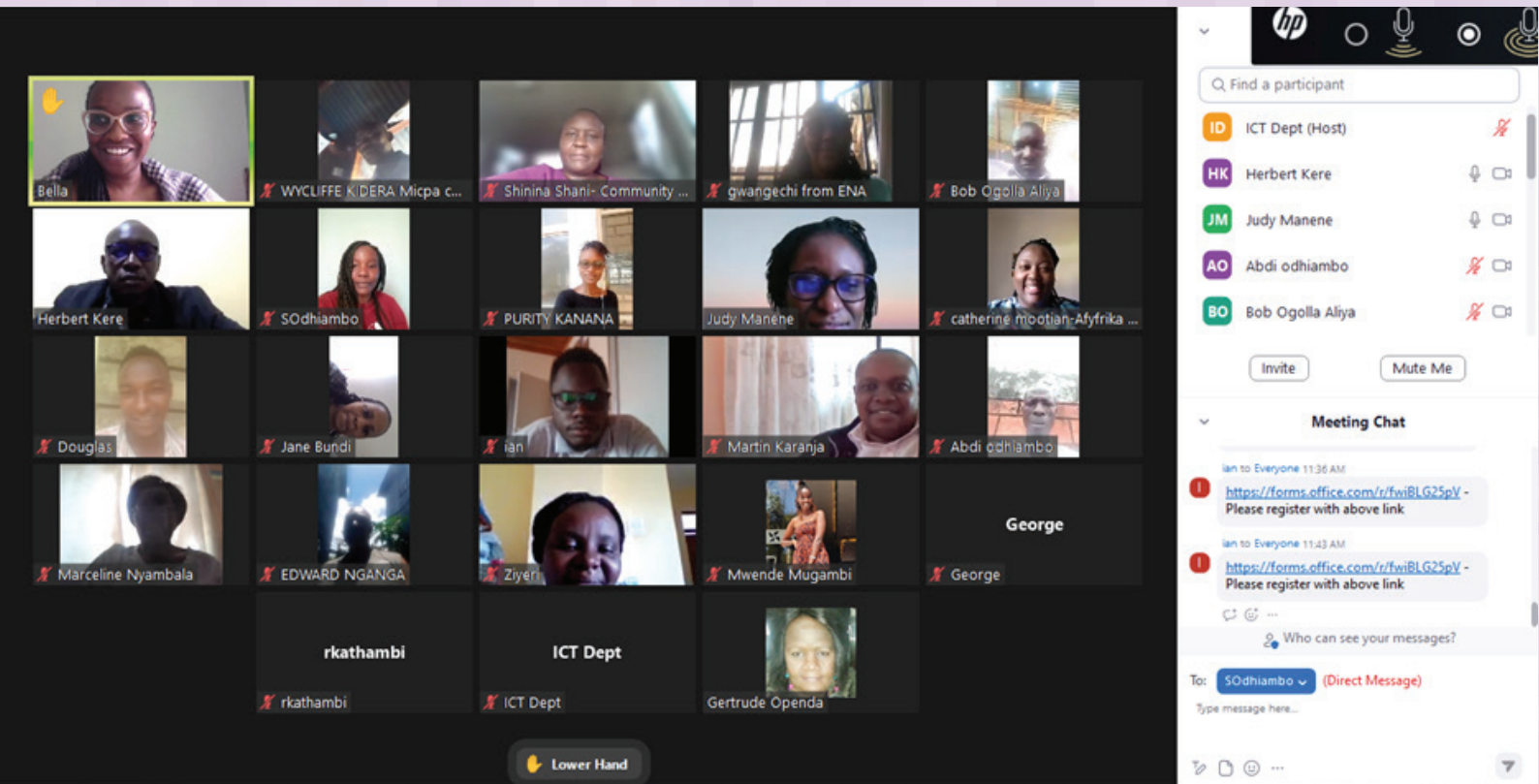
Working in partnership is central to ENA's Theory of Change and catalytic approach of reaching the beneficiaries. ENA works with local implementing partners (LIPs) by inspiring breakthroughs in the way the programs are implemented. This is achieved through empowering the communities to intervene in their most pressing problems.

The catalytic approach aims to achieve immediate and lasting change in the lives of the people through interventions executed by the LIPs. ENA believes that through working with organizations with different strengths and perspectives, greater impact on the lives of beneficiaries will be realized.

This month, ENA held its first LIP's capacity-building training on documentation and reporting. The training was attended by over 15

aLIPs currently operating in Homa Bay, Narok, Marsabit nd Samburu Counties. Some of the LIPs present at the capacity building included; AfyAfriKa, Makona Innovators, Mfangano Island Community paralegals CBO, Democracy Trust Fund, Kwacha Afrika, Millennials Speak, and Youth and Women Advocacy Network just to mention but a few.

As a catalyst for development, ENA's approach is to work with LIPs at all levels to accelerate results and increase impact. The catalytic approach aims to achieve immediate and lasting change in the lives of people through empowering women, girls, youth and people living with disabilities (PWD). ENA believes that working with others and increasing their capacity to deliver results is an accelerator to development and enhances program sustainability.



ENAs LIPs actively engaging in the Documentation and Capacity Building training.

ENA DADA PACK



Did you know?

1. That lack of pads drives 1 in 10 girls aged 15-19 to 'sex for pads'
2. A girl misses 4 days of school per month due to lack of sanitary towels which is associated with shame and stigma?

By donating Ksh. 650 you can help a girl get an ENA Dada Pack and keep her in school for a whole year.

The ENA Dada Pack Contains:

12 packets of Sanitary Towels

2 Panties

3 Cakes of Soap

Donate Ksh 1000

Through

Mpesa
Paybill

>>

972800 >>

Account:
Dada Pack

ENA's presence in Nakuru City

TO LET



The Jennifer Riria Hub is an ultra-modern, state of the art facility developed by Echo Network Africa (ENA). Located at the junction of Tom Mboya and Kipchoge Keino road in Nakuru City. The Hub has 108 shops and 184 parking slots making it the perfect and hustle free place for shopping, business, indoor and outdoor events.

ANCHOR TENANT SPACE AVAILABLE

15,700.05 Sqft
(GROUND FLOOR)
&
7,640.29 Sqft
(UPPER GROUND FLOOR)

OTHER SPACES AVAILABLE

Offices, Banking Hall,
Food Court- Restaurants,
Speciality Stores, etc.

KEY FEATURES

24 hrs CCTV security system, Ample parking, Standby generator, Sufficient water supply, Lift access to all floors, Easy access & exit Ample toilet facilities, Good access roads

Book Now ▶

Call Joanne on
0722 62 15 92
0722 54 61 24

For more details visit
www.jenniferririahub.co.ke