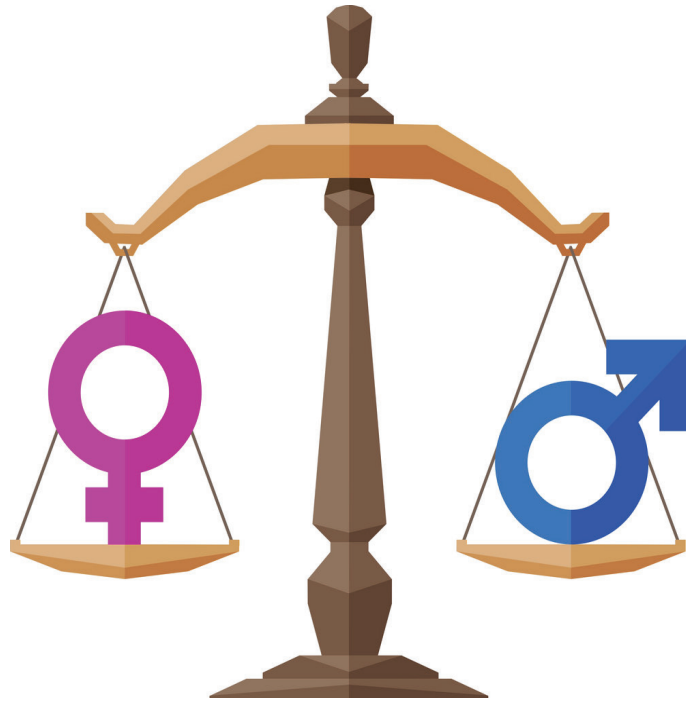


# ENA MONTHLY NEWSLETTER

MARCH 2022 ISSUE



## IN THIS ISSUE

- Promoting Gender Equality
- ENA Soaring Higher!
- Chagua Mama Initiative
- ENA restocks fingerlings in Mrongo Beach
- Saying No to FGM!
- Embracing collaborations through working with Local Implementing Partners

## Word from the Group CEO Promoting Gender Equality



**Dr. Jennifer N. Riria**

PhD, EBS, MBS, HRH/  
Goodwill Ambassador,  
ICON/HP, Chairperson  
AWLN Kenyan Chapter  
& Group CEO, ENA

Echo Network Africa (ENA) joined women globally on 8th March 2022 to celebrate International Women's Day (IWD) with the theme 'Gender Equality today for a sustainable tomorrow.'

Gender equality is not only a fundamental human right, but a necessary foundation for a peaceful, prosperous and sustainable world. It's essential for economic prosperity.

Societies that value women and men as equal are safer and healthier. This year, the world over was encouraged to not only Break the gender bias and inequality but to also celebrate women's achievements.

ENA's work on promoting Gender Equality was recognized this month as I was honored to be presented the Eminent Leaders award at the Fourth edition of the Diversity and Inclusivity Awards (DIAR).

The ceremony broadly seeks to provide a platform for sustained conversations and knowledge sharing on best practices on all matters Gender Equality, Diversity, and Inclusion, focusing on the

needs and opportunities within Africa, commitments to the Sustainable Development Goals and global trends.

Our catalytic role in promoting Gender Equality is achieved through empowering, positioning and advocating for women, girls, women with disabilities and women from marginalized communities towards attainment of their full potential.

**“Societies that value women and men as equal are safer and healthier.”**



1. Commissioner Rev. Dr. Kobina Chairman National Cohesion and Integration Commission presenting the Eminent Leader Award to Dr. Riria at the DIAR gala dinner.

2. ENA Head of Programs, Cohesion and Development Ms. Wangechi Kahuria (Left), ENA Group CEO Dr. Riria (center) and CAS Health Dr. Mwangangi (right) pose for a group photo at the Diversity and Inclusivity awards.



3. Dr. Jennifer Riria gives her acceptance speech after receiving the Eminent Leader awards. Looking on is Commissioner Rev. Dr. Kobina Chairman National Cohesion and Integration Commission.



## ENA SOARING HIGHER!

Echo Network Africa (ENA)/ Democracy Trust Fund (DTF) was this month recognized by A Political Foundation among the 28 non Partisan Political Leadership Incubators (PLI) to watch out for as we work towards building trust in Politics.

The 28 PLIs recognized are drawn from different parts of the globe, working in response to declining trust in democracy and aligning themselves with an optimistic vision for a new kind of politics bubbling on the streets. They work to give current and future politicians the skills and self-understanding they need to represent their communities well.

A Political Foundation independently evaluated ENAs/ DTFs initiatives under the Positioning & Democracy Program and feted the institution with this noble recognition. This positions ENA/DTF in the league of only three organizations selected in Africa.

The current rate of progress for the world to attain gender parity in leadership is 130 years.

Through the Positioning and Democracy program implemented by Democracy Trust Fund, ENA is contributing towards changing this narrative for women in Africa by advocating, educating and lobbying for increased numbers of women in decision making spaces and in all leadership positions.

For more information on ENA's recognition follow the link below

<https://apolitical.foundation/resources/28politicalleadershipincubators>

**“A Political Foundation independently evaluated ENAs/ DTFs initiatives under the Positioning & Democracy Program and feted the institution with this noble recognition.”**

Echo Network Africa (ENA) and the African Women Leaders Network (AWLN) officially launched the Women Mediation Network – Kenya (WMN-K) and presented the first cohort of women leaders running for political positions trained under the program Running to Win on 7th March 2022.

The launch was the curtain raiser to the International Women's day (IWD), and was presided over by Prof. Margaret Kobia, Cabinet Secretary, Ministry of Public Service, Gender, Senior Citizen Affairs, & Special Programmes and Stephen Jackson UN Women Resident Coordinator.

The WMN-K is meant to support initiatives that accelerate the attainment of the global and national goals encapsulated in the UN Resolution 1325 and domesticated in Kenya's K- NAP 1 and 11.

The network's goal is to support Government actions by providing a non-state action plan that will seek to increase recognition of the women, peace and security (WPS) agenda through a systematic, consistent, and comprehensive implementation of UNSCR1325 in Kenya.

'We cannot underscore the power of women to bring Peace,' said Prof. Kobia, Cabinet Secretary Ministry of Public Service, Gender, Senior Citizens Affairs & Special Programmes. Her appeal for peace was reiterated by the UN Women Resident Coordinator who emphasized that women can and will be the leaders of a peaceful election in Kenya.

'Peace starts with me is our clarion call as we head towards the general elections! We have developed a peace pledge that each of us should commit to whole heartedly,' said Dr. Riria, ENA Group CEO.

## Peace Pledge



**I am a woman. I am a leader.  
I am committed to peace.  
I believe no Kenyan should  
suffer or die because of  
elections.**

***Peace starts with Me.***

In addition, ENA was extremely thrilled to present the first cohort of more than 100 women leaders who went through vigorous training under the ‘National Curriculum for Women Political Leadership’ otherwise called ‘Running to Win.’

The Curriculum was launched by H.E. the First Lady, Margaret Kenyatta in the IWD of 2020 and the first Cohort graduated in 2021. ‘As we gear towards the General elections, I implore all Kenyans to vote for a woman. Chagua Mama is our clarion call,’ said Dr. Riria, ENA GCEO. These women have since presented themselves as aspirants for various political positions in the forthcoming General Elections scheduled for 9th August 2022.



1. Members of the Women Mediation Network- Kenya carry their lit candles as a symbol of peace during the launch of the Women Mediation Network- Kenya
2. Prof. Kobia, Cabinet Secretary Ministry of Public Service, Gender, Senior Citizens Affairs & Special Programmes appealing to guests to embrace peace ahead of the general elections.
3. UN Women Resident Coordinator Stephen Jackson lights up a peace candle to Shamsia Ramadhan one of the members of the Women Mediation Network Commissioner Rev. Dr. Kobia Chairman National Cohesion and Integration Commission.



## Promoting Women Leadership:

Women leaders running for political positions trained under the program Running to Win donned in Chagua Mama Lesos.



## Peace Starts with me:

ENA Group CEO Dr. Jennifer Riria signs the Amani Kenya peace board

## ENA RESTOCKS FINGERLINGS IN MRONGO BEACH

Leave no one behind is the central, transformative promise of the 2030 Agenda for Sustainable Development and its Sustainable Development Goals (SDGs). It represents the unequivocal commitment of all UN Member States to eradicate poverty in all its forms, end discrimination and exclusion, and reduce the inequalities and vulnerabilities that undermine the potential of individuals and of humanity as a whole.

Despite the adverse challenges affecting girls and women among them; cultural norms, limited resource allocation, lack of opportunities and underrepresentation, women have continued to strive in their businesses.

Echo Network Africa (ENA) leverages on its past experience on aquaculture by enhancing sustainable livelihoods and increasing meaningful participation of women in the aquaculture value chain. This month, Women from Mrongo Beach restocked fingerlings as part of their third cycle of the revolving loan fund.

ENA initiated the process by first identifying a suitable seller with 35,000 fingerlings of 10 grams to sell to the women. Muga Fish Farm was mapped out and identified as an ideal fingerlings seller as they provided both transportation and top up of fingerlings to cater for any mortalities.

The restocking process entails both the preconditioning and packaging process. The preconditioning process is where the fingerlings are not fed for a period of 48 hours so that they don't defecate in the packaging bags. Fingerling's defecation reduces or consumes oxygen within the bags thus limiting survival of fingerlings resulting to higher mortality rate.

The packaging process on the other hand is whereby the fingerlings are taken from the brooders or ponds into transportation bags usually done at night or early morning depending on quantity and weight of fingerlings required. The smaller the size of fingerlings the shorter the time for packaging and vice versa.



**Strategic Restocking;** Fingerlings Brooding Pond at Muga Farm



**Strategic Restocking:** Fingerlings packaged and ready for restocking



**Strategic Restocking:** Fingerlings restocking process into Mrongo Cage.

## SAYING NO TO FGM!

Over the past 39 years Echo Network Africa (ENA) has addressed issues that impede on Girls and Women's social, economic and political inclusion in Kenya.

Girls and especially those leaving in rural areas face four main challenges; Female Genital Mutilation, Period Poverty, Teenage Pregnancies and Child marriages. These harmful and patriarchal practices affect the girls physical, mental, social and psychological being.

ENA seeks to catalyze acceptance and commitment by communities in Narok County to eradicate and abandon FGM through the Girls Excel Initiative! The focus area promotes the learning of Science, technology, engineering and mathematics (STEM) subjects as an alternative rites of passage.

This month ENA met up with community leaders and champions from Narok County among them church Leaders: Members of Council of Elders (of the Maasai Community); Community Leaders; Village Elders; Women Leaders; FGM Advocates; Community Health Volunteers (CHV); School Committee Member; and Ashekenishu CBO committee members.

The community leaders accepted the implementation of the Girls Excel initiative in Narok and blessed ENA to undertake all the relevant activities.

The gatekeepers agreed on the fact that FGM is a dangerous cultural practice that should be eliminated though some of them are still propagating it.



### Eradicating FGM:

Narok County FGM Gatekeepers among them community leaders and champions pose for a group photo after a **successful induction meeting** with ENA team.

## EMBRACING COLLABORATIONS THROUGH WORKING WITH LOCAL IMPLEMENTING PARTNERS

Working in partnership is central to ENA's Theory of Change and catalytic approach of reaching the beneficiaries. ENA works with local implementing partners (LIPs) by inspiring breakthroughs in the way the programs are implemented.

This is achieved through empowering the communities to intervene in their most pressing problems. The catalytic approach aims to achieve immediate and lasting change in the lives of the people through interventions executed by the LIPs. ENA believes that through working with organizations with different strengths and perspectives, greater impact on the lives of beneficiaries will be realized.

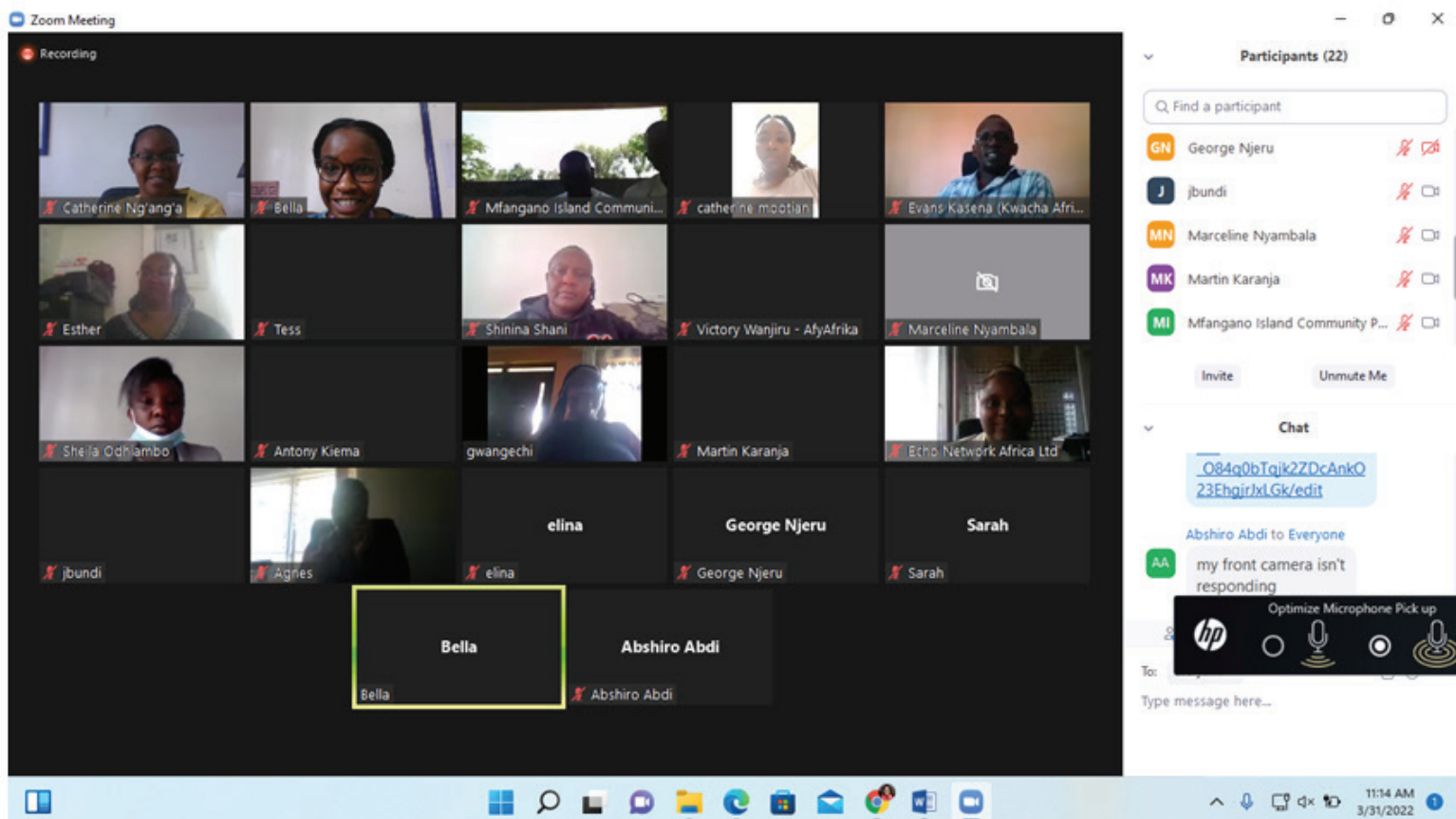
This month, ENA held its first LIP's induction meeting which attracted over 15 LIPs currently operating in Homa Bay, Narok, Marsabit and Samburu Counties. Some of the LIPs present at the induction meeting included; AfyAfrika,

Makona Innovators, Mfangano Island Community paralegals CBO, Democracy Trust Fund, Kwacha Afrika, Millennials Speak, and Youth and Women Advocacy Network just to mention but a few.

The LIPs were inducted on ENA's initiatives and processes and were also accorded the opportunity to share their field experiences. As a catalyst for development, ENA's approach is to work with LIPs at all levels to accelerate results and increase impact.

The catalytic approach aims to achieve immediate and lasting change in the lives of people through empowering women, girls, youth and people living with disabilities (PWD).

ENA believes that working with others and increasing their capacity to deliver results is an accelerator to development and enhances program sustainability.



**Catalytic Collaborations :** Participants listening keenly to the LIP induction moderation session.

# TO LET



**The Jennifer Riria Hub** is an ultra-modern, state of the art facility developed by Echo Network Africa (ENA). Located at the junction of Tom Mboya and Kipchoge Keino road in Nakuru town ( Soon City). The Hub has 108 shops and 184 parking slots making it the perfect and hustle free place for shopping, business, indoor and outdoor events.

#### **ANCHOR TENANT SPACE AVAILABLE**

15,700.05 Sqft  
(GROUND FLOOR)

&

7,640.29 Sqft  
(UPPER GROUND FLOOR)

#### **OTHER SPACES AVAILABLE**

Offices, Banking Hall,  
Food Court- Restaurants,  
Speciality Stores, etc.

#### **KEY FEATURES**

24 hrs CCTV security system, Ample parking, Standby generator, Sufficient water supply, Lift access to all floors, Easy access & exit Ample toilet facilities, Good access roads

**Book Now** ▶ **Rachna Chavda**  
**0787 019 680**  
rachna@piagroup.africa

**PROPERTY MANAGED BY**



For more details visit [www.jenniferririahub.co.ke](http://www.jenniferririahub.co.ke)